

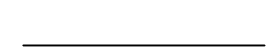






ELECTRICAL SYMBOL LIST

NOTE: This is a standard symbol list and not all items listed may be used.

Abbreviations

A	AMPERES, AMBER
AC	ALTERNATING CURRENT, AIR CONDITIONER
AFC	ABOVE FINISHED CEILING
AFF	ABOVE FINISHED FLOOR
AFG	ABOVE FINISHED GRADE
AIC	AVAILABLE INTERRUPTING CAPACITY
AWG	AMERICAN WIRE GAUGE
BC	BARE COPPER
C	CONDUIT, CLOSE, CONTROL
CB	CIRCUIT BREAKER
CFCI	CONTRACTOR FURNISHED CONTRACTOR INSTALLED
CFOI	CONTRACTOR FURNISHED OWNER INSTALLED
CLG	CEILING
COM	COMMUNICATION
CT	CURRENT TRANSFORMER
CU	COPPER
DN	DOWN
EF	EXHAUST FAN
F	FUSE
FACP	FIRE ALARM CONTROL PANEL
FBO	FURNISHED BY OTHERS
G, GND	GROUND
GFCI	GROUND FAULT CIRCUIT INTERRUPTER
GFI	GROUND FAULT INTERRUPTER
GRC	GALVANIZED RIGID STEEL CONDUIT
KVA	KILOVOLT AMPERES
KW	KILOWATT
LED	LIGHT EMITTING DIODE
MDB	MAIN DISTRIBUTION BOARD
MDP	MAIN DISTRIBUTION PANEL
MSB	MAIN SWITCHBOARD
MT, MTD	MOUNT, MOUNTED
MT	EMPTY CONDUIT WITH NYLON PULL CORD
N/A	NOT APPLICABLE
N	NEUTRAL
NEC	NATIONAL ELECTRIC CODE
NEMA	NATIONAL ELECTRICAL MANUFACTURERS ASSOCIATION
OFCI	OWNER FURNISHED, CONTRACTOR INSTALLED
OFOI	OWNER FURNISHED, OWNER INSTALLED
OS	OCCUPANCY SENSOR
PH	PHASE
PNL	PANEL
REF	REFERENCE
REQD	REQUIRED
S	SWITCH
SIM	SIMILAR
TELE	TELEPHONE
TTB	TELEPHONE TERMINAL BOARD
TYP	TYPICAL
UL	UNDERWRITERS LABORATORIES
UON	UNLESS OTHERWISE NOTED
V	VOLTS, VOLTAGE
W/	WITH
W	WIRE, WHITE
WP	WEATHERPROOF

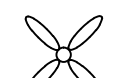






Raceways

	CONDUIT CONCEALED IN WALL OR CEILING SPACE
	CONDUIT ROUTED BELOW FLOOR / GRADE
	CONDUIT ELLED DOWN
	CONDUIT ELLED UP
	CONDUIT/WIRING CONTINUATION
	CONDUIT/WIRING STUBBED OUT WITH END CAP OR INSULATED PLASTIC BUSHING
	FLEXIBLE CONDUIT

Switches and Receptacles

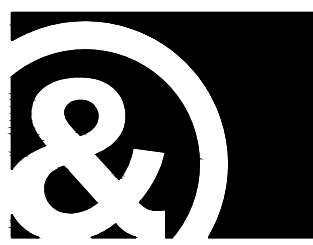
\$	SINGLE POLE SWITCH
2	= DOUBLE POLE SWITCH
3	= THREE-WAY SWITCH
4	= FOUR-WAY SWITCH
o THRU z (LOWERCASE)	= LUMINAIRE CONTROL DESIGNATION
D	= DIMMER
F	= FAN SPEED CONTROL
K	= KEY OPERATED SWITCH
L	= LIGHTED HANDLE
M	= MANUAL MOTOR STARTER WITH THERMAL OVERLOAD
P	= SWITCH WITH PILOT LIGHT
S	= SENTRY SWITCH
T	= INTERVAL TIMER
W	= WEATHERPROOF SWITCH
V	= LOW VOLTAGE SWITCH
?	= DESIGNER DEFINED SWITCH

Lighting

	CEILING FAN
	EXIT SIGN CEILING MOUNTED, ARROW(S) INDICATES DIRECTION IF SHOWN
	EXIT SIGN WALL MOUNTED, ARROW(S) INDICATES DIRECTION IF SHOWN
	AREA LUMINAIRE ARM MOUNTED WITH POLE AND CONCRETE BASE
	SURFACE OR PENDANT MOUNTED LUMINAIRE
	SURFACE OR PENDANT MOUNTED LUMINAIRE CONNECTED TO EMERGENCY/LIFE SAFETY CIRCUIT OR WITH INTEGRAL EMERGENCY BATTERY CONNECTED TO UNSWITCHED CIRCUIT
	WALL MOUNTED LUMINAIRE

LIGHTING FIXTURE SCHEDULE

TAG	MANUFACTURER	DESCRIPTION	LAMPS	WATTS	COLOR	MOUNTING
A	LITHONIA #FMLL-9-30840	4' CLOUD WRAPAROUND LED AREA LIGHTING FIXTURE	LED BY MFR	36	WH	SURFACE
B	HD SUPPLY #326867	LED DRUM LIGHT	LED BY MFR	18	NKL	SURFACE
C	WAC "MODERN FORMS" #WVS-3624-BN	LED WALL BRACKET AT VANITY	LED BY MFR	22	NKL	SURFACE-WALL
D	GOOD EARTH LIGHTING #SE1018-BRM-01LFO-U	EXTERIOR LED MINI WALLPACK	LED BY MFR	10	BRZ	SURFACE-WALL
E	LITHONIA #TWR1-LED-1-50K-MVOLT-PE	EXTERIOR LED WALLPACK WITH INTEGRAL PHOTOCELL	LED BY MFR	31	DBZ	SURFACE-WALL
F	ADDRESS-O-LITE WITH CUSTOM VERTICAL ADDRESS MARK TELEPHONE 800-843-5483	EXTERIOR LED-ILLUMINATED UNIT ADDRESS SIGN	LED BY MFR	6	BLK	VERTICALLY MOUNTED SURFACE-WALL OVER NEW FLUSH OUTLET BOX
--	NOT USED	--	--	--	--	--
--	NOT USED	--	--	--	--	--



monighandesign
710 Twelfth Street
Sacramento, CA 95814
fascimile: 916.448.5401
www.monighan.com



Stanton
ENGINEERING
PROJECT 15073
1819 K Street, Suite 250
Sacramento, CA 95811
TEL. 916.288.6250
www.stantoneng.com

ELEC'L SYMBOLS & FIXTURE SCHEDULE

RICHLAND HOUSING PHASE II
DEVELOPMENT 1 - BUILDING TYPES 'A', 'B' & 'C'
REHABILITATION & IMPROVEMENTS
YUBA CITY, CALIFORNIA 95692

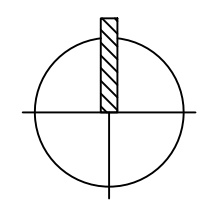
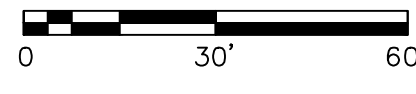
DATE 11/24/2016
DRAWN BY GS/NN/KD
JOB 15002-000
SHEET

E0.1

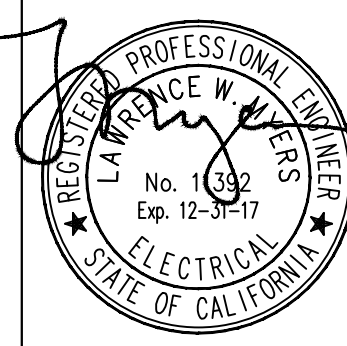


1 ELECTRICAL SITE PLAN

SCALE: 1"=30'-0"



monighandesign
 710 Twelfth Street
 Sacramento, CA 95814
 Phone: 916.448.5401
 Facsimile: 916.448.5401
 www.monighan.com



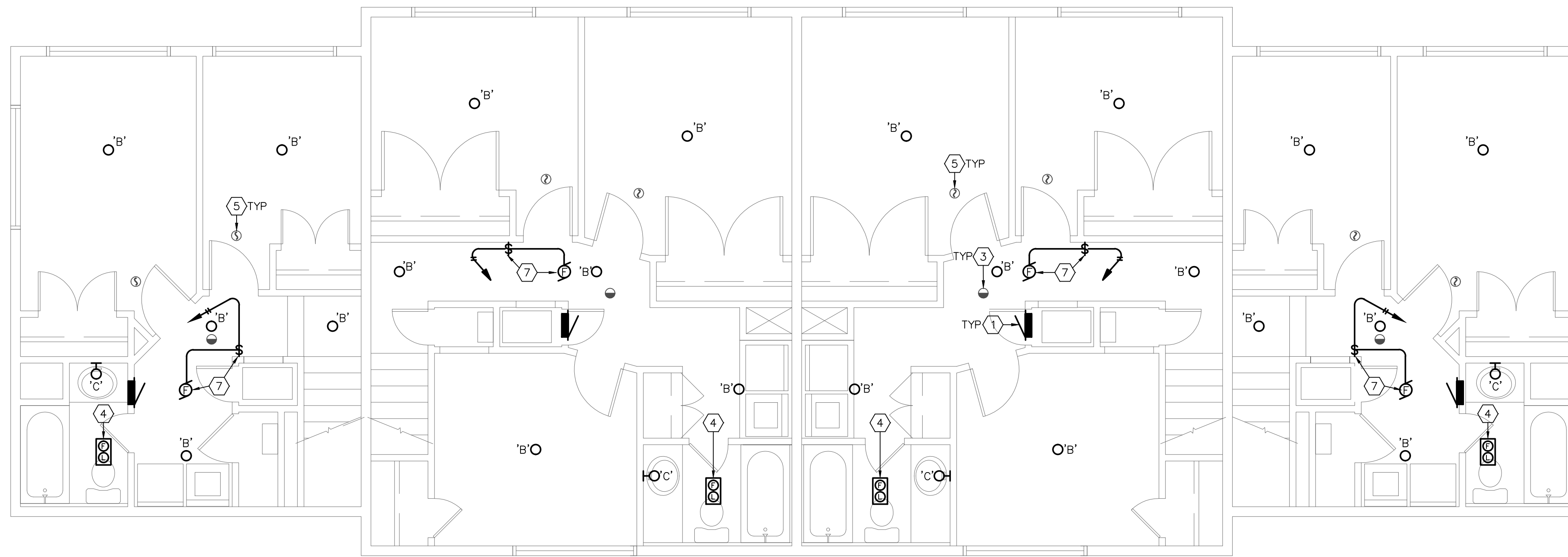
Stanton
 ENGINEERING
 PROJECT 15073
 1819 K Street, Suite 250
 Sacramento, CA 95811
 TEL 916.288.6250
 www.stantoneng.com

ELECTRICAL SITE PLAN

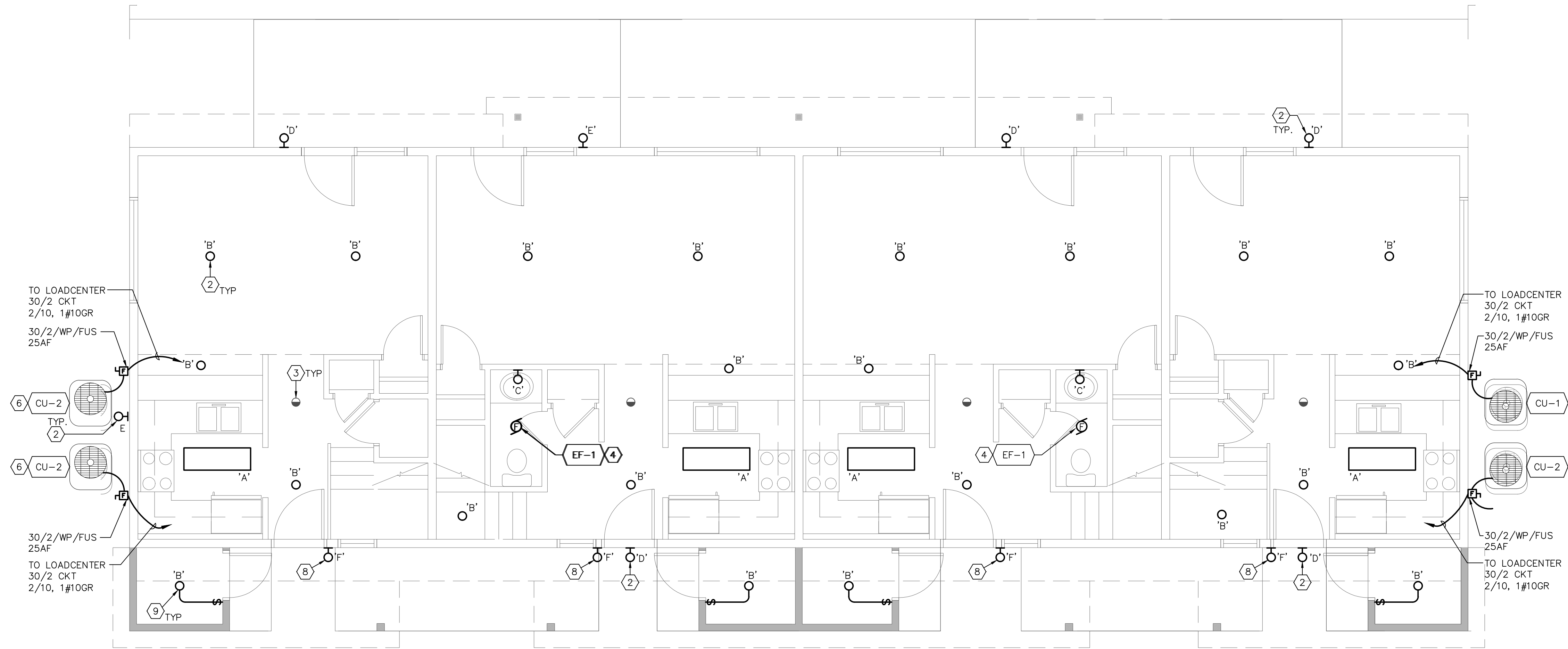
RICHLAND HOUSING PHASE II
 DEVELOPMENT 1 - BUILDING TYPES 'A', 'B' & 'C'
 REHABILITATION & IMPROVEMENTS
 YUBA CITY, CALIFORNIA 95992

DATE 11/24/2016
 DRAWN BY GS/NN/KD
 JOB 15002-000
 SHEET

E1.0



2 BUILDING A SECOND FLOOR ELECTRICAL PLAN
 SCALE: 1/4"=1'-0"
 0 2' 4' 8'



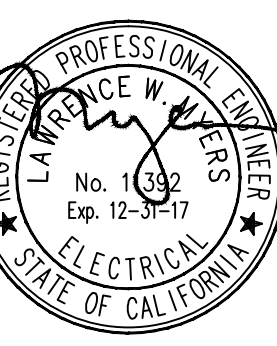
1 BUILDING A FIRST FLOOR ELECTRICAL PLAN
 SCALE: 1/4"=1'-0"
 0 2' 4' 8'

SHEET KEYNOTES

- 1 (E) 100A 120/240V 1Ø LOADCENTER TO REMAIN WITH MODIFICATION: PROVIDE NEW 20/1 SQUARE D "OO" BREAKER AT AVAILABLE SPACE AT BOTTOM OF LOADCENTER. THIS NEW CIRCUIT BREAKER WILL SERVE THE NEW FAN BLOWER AND THE NEW WHOLE HOUSE EXHAUST FAN.
- 2 APPROXIMATE LOCATION OF AN EXISTING LIGHTING FIXTURE TO BE REPLACED WITH A NEW AS SCHEDULED. DISCONNECT AND REMOVE THE (E) FIXTURE AND RELATED LAMPS. PROVIDE NEW FIXTURE PER SCHEDULE WITHOUT SUBSTITUTION.
- 3 PROVIDE NEW COMBINATION SMOKE AND CARBON MONOXIDE SENSOR APPROXIMATELY WHERE SHOWN. CONNECT TO NEAREST UNSWITCHED GENERAL LIGHTING CIRCUIT.
- 4 CONNECT NEW EXHAUST FAN THAT REPLACES EXISTING FAN. RE-USE EXISTING BRANCH CIRCUITING. FAN FURNISHED/INSTALLED BY HVAC.
- 5 PROVIDE NEW SMOKE SENSOR APPROXIMATELY WHERE SHOWN. CONNECT TO NEAREST UNSWITCHED GENERAL LIGHTING CIRCUIT.
- 6 CONNECT NEW HVAC CONDENSER UNIT. PROVIDE WEATHERPROOF FUSIBLE DISCONNECT SWITCH AND FEEDER; RUN FEEDER CONDUIT AND WIRE EXPOSED TO SECOND FLOOR ATTIC (1/2" - 2#10, #10 GROUND) AND THEN 10/2 PLUS GROUND TYPE 'NM' FEEDER TO (E) FEEDER BREAKER AT LOADCENTER.
- 7 CONNECT 550 WATT WHOLE HOUSE FAN MOTOR IN CEILING SPACE. PROVIDE SPST RATED MOTOR SWITCH AT +48" TO CONTROL FAN.
- 8 PROVIDE INTERNALLY-ILLUMINATED ADDRESS SIGN BETWEEN DOOR JAMB AND WINDOW LIGHT, AND CONNECT TO NEAREST UNSWITCHED GENERAL LIGHTING BRANCH CIRCUIT AS REQUIRED. OBTAIN ADDRESS NOMENCLATURE FROM OWNER.
- 9 PROVIDE NEW LIGHT FIXTURE AND SWITCH, APPROXIMATELY WHERE SHOWN. CONNECT TO NEAREST UNSWITCHED GENERAL LIGHTING CIRCUIT.



monighandesign
 710 Twelfth Street
 Sacramento, CA 95814
 Phone: 916.448.5401
 Fax: 916.448.5401
 www.monighan.com



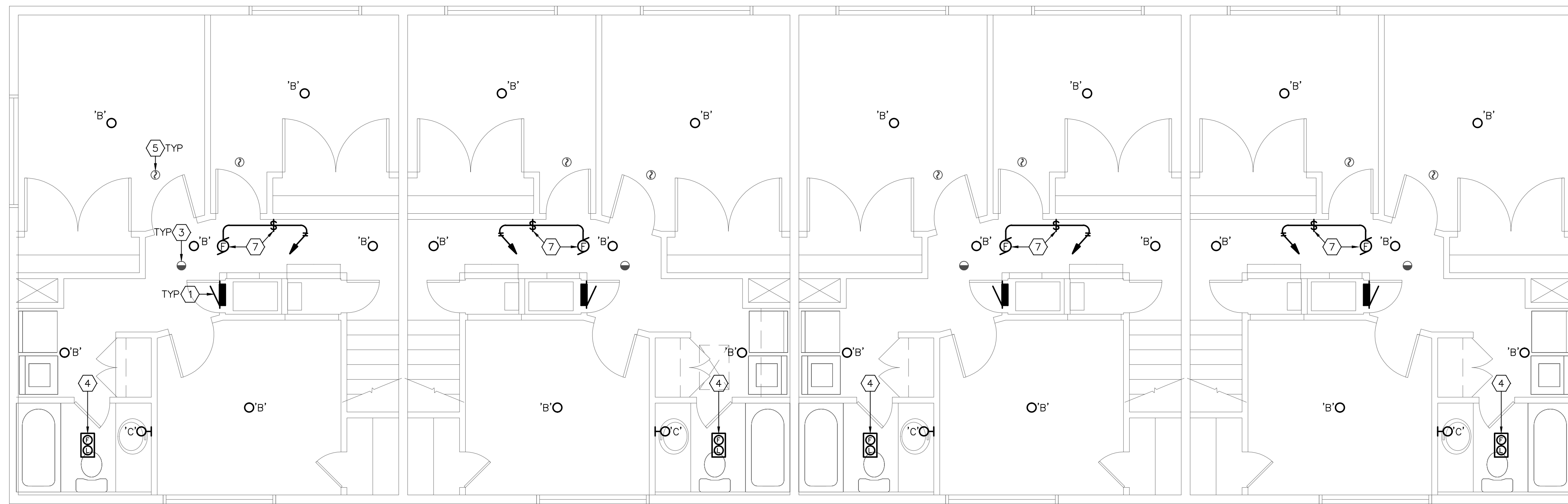
Stanton
 ENGINEERING
 PROJECT 15073
 1819 K Street, Suite 250
 Sacramento, CA 95811
 TEL 916.288.6250
 www.stantoneng.com

**BUILDING 'A'
 ELECTRICAL PLANS**

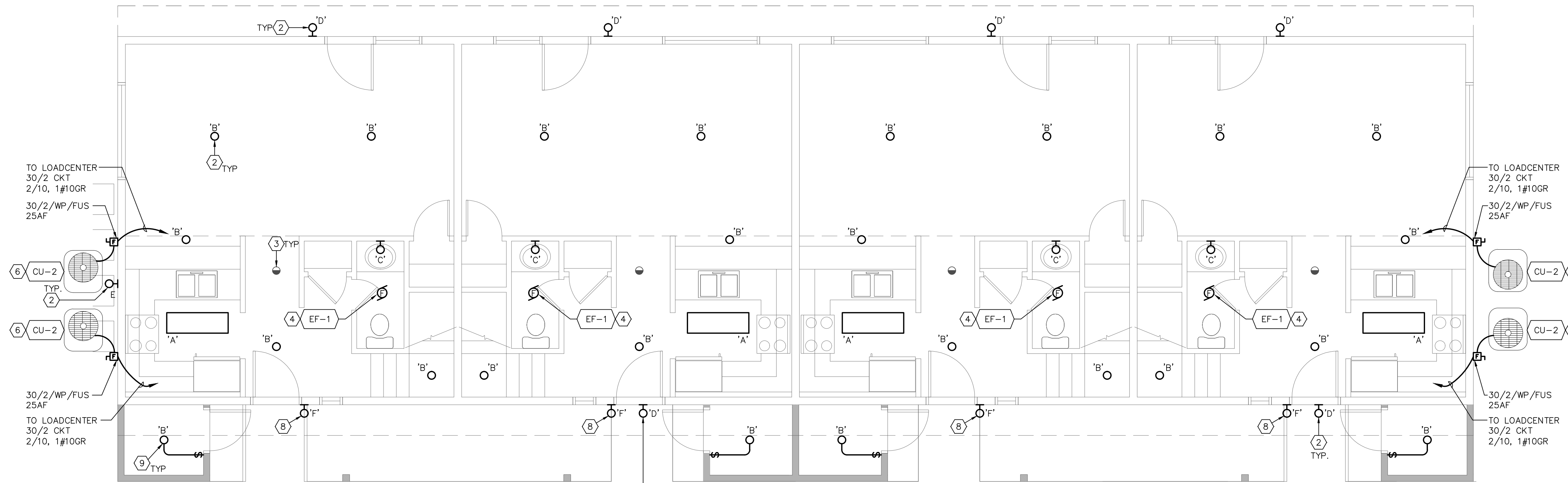
**RICHLAND HOUSING PHASE II
 DEVELOPMENT 1, BUILDING TYPES 'A', 'B' & 'C'
 REHABILITATION & IMPROVEMENTS**
 YUBA CITY, CALIFORNIA 95692

DATE 11/24/2016
 DRAWN BY GS/NN/KD
 JOB 15002-000
 SHEET

E2.0



2 BUILDING B SECOND FLOOR ELECTRICAL PLAN
 SCALE: 1/4"=1'-0"
 0 2' 4' 8'



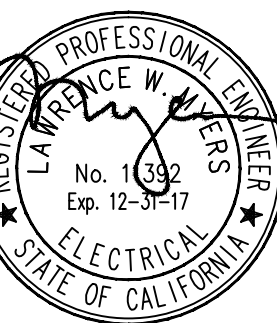
1 BUILDING B FIRST FLOOR ELECTRICAL PLAN
 SCALE: 1/4"=1'-0"
 0 2' 4' 8'

SHEET KEYNOTES

- 1 (E) 100A 120/240V 1Ø LOADCENTER TO REMAIN WITH MODIFICATION: PROVIDE NEW 20/1 SQUARE D "OO" BREAKER AT AVAILABLE SPACE AT BOTTOM OF LOADCENTER. THIS NEW CIRCUIT BREAKER WILL SERVE THE NEW FAN BLOWER AND THE NEW WHOLE HOUSE EXHAUST FAN.
- 2 APPROXIMATE LOCATION OF AN EXISTING LIGHTING FIXTURE TO BE REPLACED WITH A NEW AS SCHEDULED. DISCONNECT AND REMOVE THE (E) FIXTURE AND RELATED LAMPS. PROVIDE NEW FIXTURE PER SCHEDULE WITHOUT SUBSTITUTION.
- 3 PROVIDE NEW COMBINATION SMOKE AND CARBON MONOXIDE SENSOR APPROXIMATELY WHERE SHOWN. CONNECT TO NEAREST UNSWITCHED GENERAL LIGHTING CIRCUIT.
- 4 CONNECT NEW EXHAUST FAN THAT REPLACES EXISTING FAN. RE-USE EXISTING BRANCH CIRCUITING. FAN FURNISHED/INSTALLED BY HVAC.
- 5 PROVIDE NEW SMOKE SENSOR APPROXIMATELY WHERE SHOWN. CONNECT TO NEAREST UNSWITCHED GENERAL LIGHTING CIRCUIT.
- 6 CONNECT NEW HVAC CONDENSER UNIT. PROVIDE WEATHERPROOF FUSIBLE DISCONNECT SWITCH AND FEEDER; RUN FEEDER CONDUIT AND WIRE EXPOSED TO SECOND FLOOR ATTIC (1/2" - 2#10, #10 GROUND) AND THEN 10/2 PLUS GROUND TYPE 'NM' FEEDER TO (E) FEEDER BREAKER AT LOADCENTER.
- 7 CONNECT 550 WATT WHOLE HOUSE FAN MOTOR IN CEILING SPACE. PROVIDE SPST RATED MOTOR SWITCH AT +48" TO CONTROL FAN.
- 8 PROVIDE INTERNALLY-ILLUMINATED ADDRESS SIGN BETWEEN DOOR JAMB AND WINDOW LIGHT, AND CONNECT TO NEAREST UNSWITCHED GENERAL LIGHTING BRANCH CIRCUIT AS REQUIRED. OBTAIN ADDRESS NOMENCLATURE FROM OWNER.
- 9 PROVIDE NEW LIGHT FIXTURE AND SWITCH, APPROXIMATELY WHERE SHOWN. CONNECT TO NEAREST UNSWITCHED GENERAL LIGHTING CIRCUIT.



monighandesign
 710 Twelfth Street
 Sacramento, CA 95814
 Telephone: 916.448.5401
 www.monighan.com



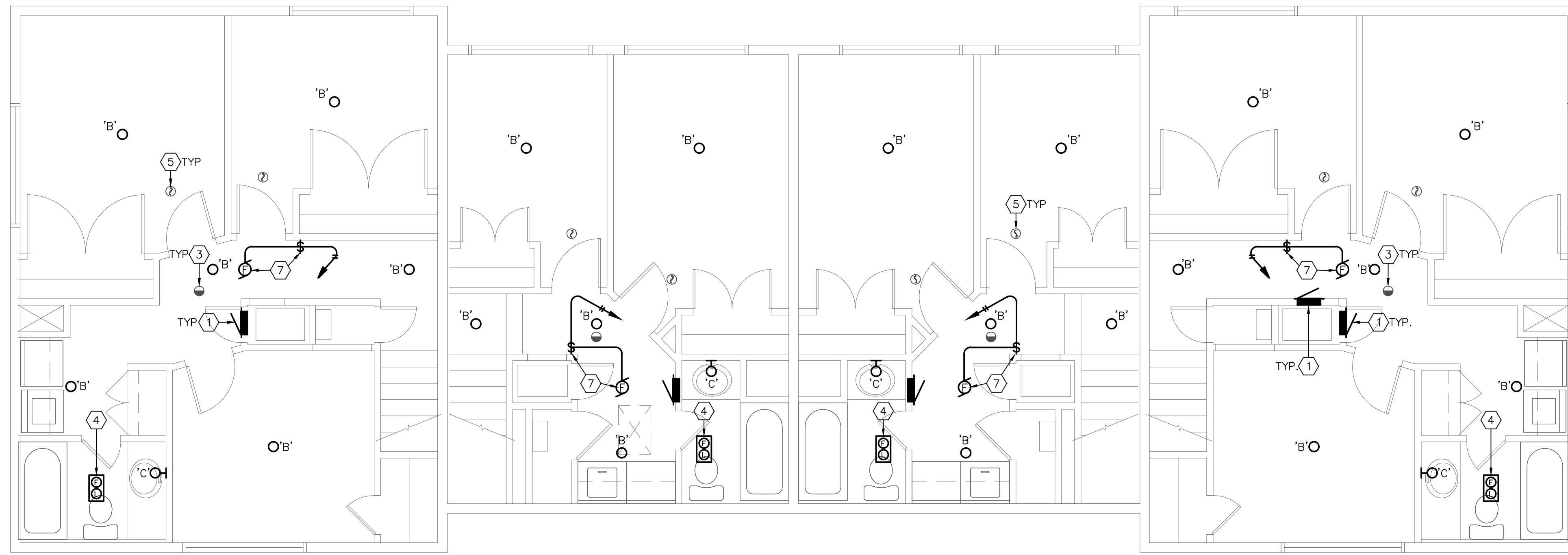
Stanton
 ENGINEERING
 PROJECT 15073
 1819 K Street, Suite 250
 Sacramento, CA 95811
 TEL. 916.288.6250
 www.stantoneng.com

BUILDING 'B'
 ELECTRICAL PLANS

RICHLAND HOUSING PHASE II
 DEVELOPMENT 1 - BUILDING TYPES 'A', 'B' & 'C'
 REHABILITATION & IMPROVEMENTS
 YUBA CITY, CALIFORNIA 95692

DATE 11/24/2016
 DRAWN BY GS/NN/KD
 JOB 15002-000
 SHEET

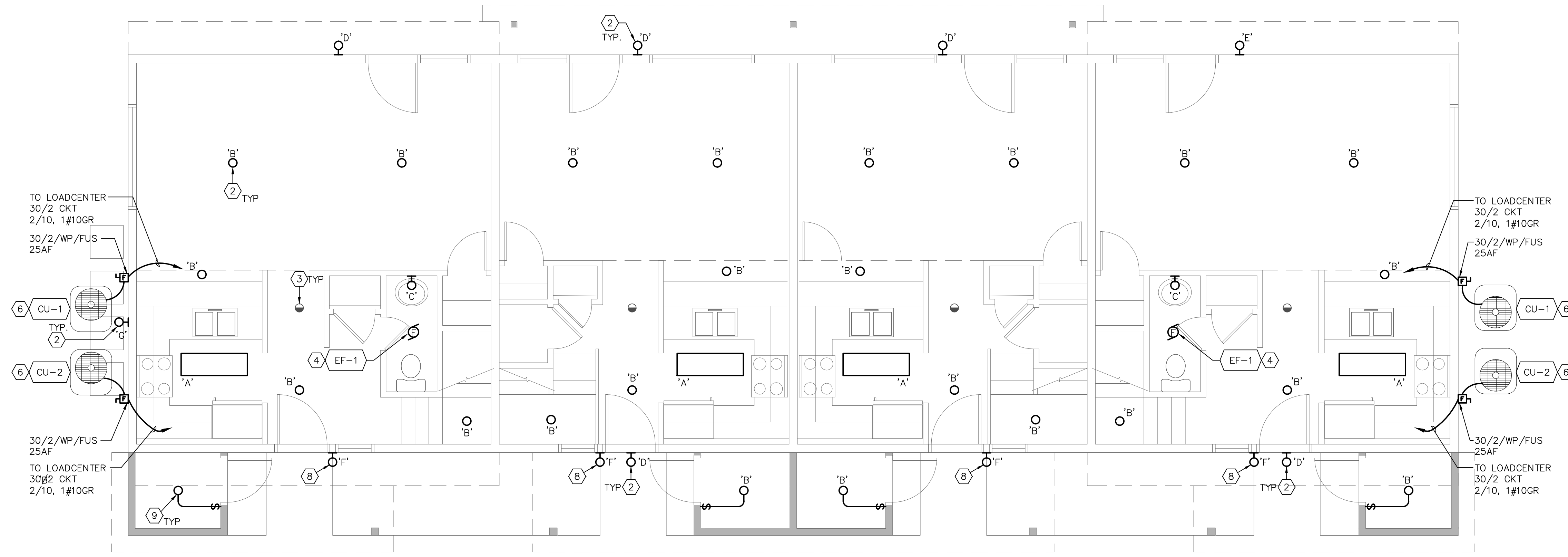
E2.1



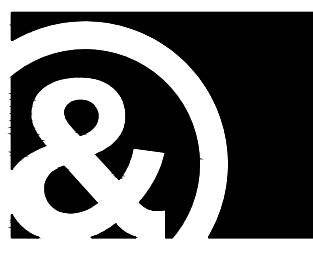
2 BUILDING C SECOND FLOOR ELECTRICAL PLAN
 SCALE: 1/4"=1'-0"
 0 2' 4' 8'

SHEET KEYNOTES

- 1 (E) 100A 120/240V 1Ø LOADCENTER TO REMAIN WITH MODIFICATION: PROVIDE NEW 20/1 SQUARE D "QO" BREAKER AT AVAILABLE SPACE AT BOTTOM OF LOADCENTER. THIS NEW CIRCUIT BREAKER WILL SERVE THE NEW FAN BLOWER AND THE NEW WHOLE HOUSE EXHAUST FAN.
- 2 APPROXIMATE LOCATION OF AN EXISTING LIGHTING FIXTURE TO BE REPLACED WITH A NEW AS SCHEDULED. DISCONNECT AND REMOVE THE (E) FIXTURE AND RELATED LAMPS. PROVIDE NEW FIXTURE PER SCHEDULE WITHOUT SUBSTITUTION.
- 3 PROVIDE NEW COMBINATION SMOKE AND CARBON MONOXIDE SENSOR APPROXIMATELY WHERE SHOWN. CONNECT TO NEAREST UNSWITCHED GENERAL LIGHTING CIRCUIT.
- 4 CONNECT NEW EXHAUST FAN THAT REPLACES EXISTING FAN. RE-USE EXISTING BRANCH CIRCUITING. FAN FURNISHED/INSTALLED BY HVAC.
- 5 PROVIDE NEW SMOKE SENSOR APPROXIMATELY WHERE SHOWN. CONNECT TO NEAREST UNSWITCHED GENERAL LIGHTING CIRCUIT.
- 6 CONNECT NEW HVAC CONDENSER UNIT. PROVIDE WEATHERPROOF FUSIBLE DISCONNECT SWITCH AND FEEDER; RUN FEEDER CONDUIT AND WIRE EXPOSED TO SECOND FLOOR ATTIC (1/2" - 2#10, #10 GROUND) AND THEN 10/2 PLUS GROUND TYPE 'NM' FEEDER TO (E) FEEDER BREAKER AT LOADCENTER.
- 7 CONNECT 550 WATT WHOLE HOUSE FAN MOTOR IN CEILING SPACE. PROVIDE SPST RATED MOTOR SWITCH AT +48" TO CONTROL FAN.
- 8 PROVIDE INTERNALLY-ILLUMINATED ADDRESS SIGN BETWEEN DOOR JAMB AND WINDOW LIGHT, AND CONNECT TO NEAREST UNSWITCHED GENERAL LIGHTING BRANCH CIRCUIT AS REQUIRED. OBTAIN ADDRESS NOMENCLATURE FROM OWNER.
- 9 PROVIDE NEW LIGHT FIXTURE AND SWITCH, APPROXIMATELY WHERE SHOWN. CONNECT TO NEAREST UNSWITCHED GENERAL LIGHTING CIRCUIT.



1 BUILDING C FIRST FLOOR ELECTRICAL PLAN
 SCALE: 1/4"=1'-0"
 0 2' 4' 8'



monighandesign
 710 Wealth Street
 Sacramento, CA 95814
 (916) 448-5401
 www.monighan.com



Stanton
 ENGINEERING
 PROJECT 15073
 1819 K Street, Suite 250
 Sacramento, CA 95811
 TEL 916.288.6250
 www.stantoneng.com

**BUILDING 'C'
 ELECTRICAL PLANS**

**RICHLAND HOUSING PHASE II
 DEVELOPMENT 1 - BUILDING TYPES 'A', 'B' & 'C'
 REHABILITATION & IMPROVEMENTS**
 YUBA CITY, CALIFORNIA 95692

DATE 11/24/2016
 DRAWN BY GS/NN/KD
 JOB 15002-000
 SHEET